



INTERNATIONAL ASSOCIATION OF  
FINANCIAL EXECUTIVES INSTITUTES

*The Premier Global Society of Financial Executives*

Edition 007 - 2022

# FORUM

eNewsletter of the International Association of Financial Executives Institutes

THE PREMIER GLOBAL SOCIETY  
OF FINANCIAL EXECUTIVES



[www.iafei.org](http://www.iafei.org)

[www.facebook.com/IAFEI](http://www.facebook.com/IAFEI)

# Asia And China Sustainability: Trends, Challenges And Outlook

Financial choices can have a more positive and sustainable impact on the world. An approach that not only considers the financial gain of a position but also the effects of the business on the well-being of others.

The concept of Environmental, Social and Governance (ESG) focuses on non-financial information, especially the corporate risks of ESG practices.

The Covid-19 pandemic brought significant impacts on the global economy and prompted investors to reevaluate the resilience and sustainability of their companies. Businesses are forced to explore innovative solutions to overcome negative implications.

The webinar, appropriately themed “Asia and China Sustainability: Trends, Challenges & Outlook” was a great discussion on what are the key factors of ESG. Our speakers, Lawrence Lau and Jessie Zhang of Ernst & Young (EY) shared with us the key takeaways of ESG.

ESG is not just a compliance issue. It focuses on the sustainability of the company. It is not a one size fits all, it tackles different aspects depending on what industry you are.

The second webinar for the year was attended by more than 100 participants via zoom and IAFEI Facebook page.



## ASIA & CHINA SUSTAINABILITY: TRENDS, CHALLENGES & OUTLOOK

[August 23, 2022] 1400H (CST)

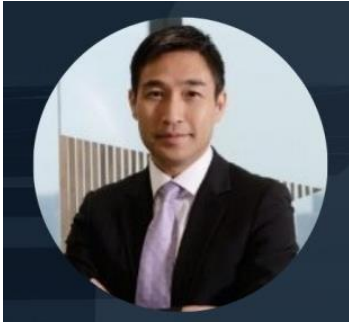


**MR. LAWRENCE LAU**  
Partner & Leader  
Financial Accounting Advisory Services  
EY Greater China



**MS. JESSIE ZHANG**  
Partner  
Sustainability Services  
EY Greater China

# Asia And China Sustainability: Trends, Challenges And Outlook



## MR. LAWRENCE LAU

Partner & Leader  
Financial Accounting Advisory Services  
EY Greater China

*Lawrence is an assurance partner, leader of EY Financial Accounting Advisory Services in Greater China and a member of EY China Carbon Neutrality Group. He began his professional career in Hong Kong and relocated to Shanghai in 2004.*

*Lawrence has almost 30 years of working experience. He leads a professional team of 300 people in Greater China, providing advisory services, including financial accounting, process improvement and transaction accounting, to CFOs and finance functions of domestic, Fortune 500 and multinational companies. He also provides ESG, carbon neutrality and sustainability advisory services to domestic and overseas listed companies. He has served clients in a wide variety of industries.*

*He is familiar with IFRS, US GAAP, HKFRS and PRC GAAP. He is knowledgeable in capital market operations, listing rules and regulations. He also has an in-depth understanding of the ESG guidelines of the Hong Kong Stock Exchange, TCFD and other frameworks.*

## MS. JESSIE ZHANG

Partner  
Sustainability Services  
EY Greater China

*Jessie is a partner of EY sustainability service in Greater China.*

*Jessie has over 13 years of experience in sustainability/ESG industry, including sustainability strategy and goals setting, Sustainability Reporting / Environmental, Social and Governance (ESG) reporting advisory, ESG management system, ESG risk management, ESG index advisory, Responsible Investment advisory, Environmental, Health and Safety (EHS) audit, EHS IT implementation, Green Bond Issuance Assurance, Responsible Supply Chain, as well as regulatory support projects in China, Taiwan, Hong Kong and Singapore.*

*Master of Environmental Engineering, Hong Kong University of Science and Technology (HKUST), Hong Kong*

[Click HERE to watch the video recording](#)

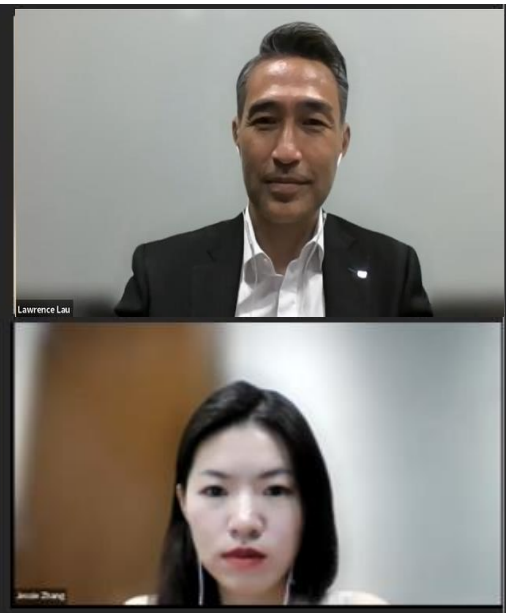
# Asia And China Sustainability: Trends, Challenges And Outlook



*Mr. Xiaojang Pan, Chairman of IAFEI and Secretary General at CACFO with his opening remarks*



*Mr. Abelardo Cortez, Secretary and Treasurer (Interim) IAFEI, delivering his closing remarks*

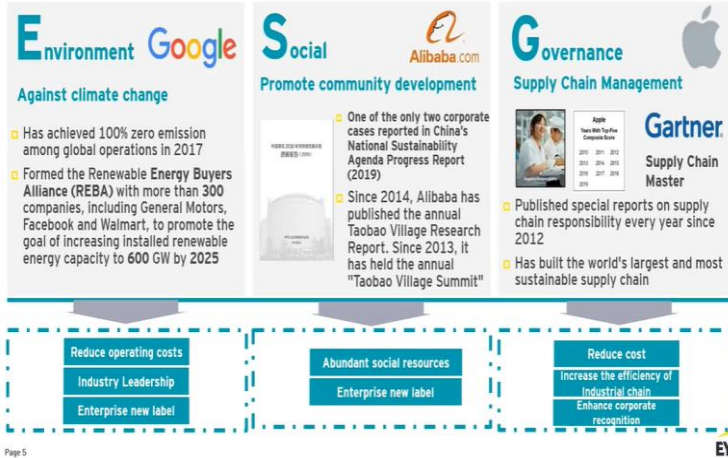


*Speakers Mr. Lawrence Lau and Ms. Jessie Zhang on the "Asia & China Sustainability: Trends, Challenges & Outlook"*

# Asia And China Sustainability: Trends, Challenges And Outlook

## Better ESG performance could bring greater competitive advantages to enterprises

- ESG stands for Environmental, Social and Governance. Leading international companies have already gained advantages including technology, cost, reputation, and cooperation resources by contributing to solving their own or social sustainability issues such as climate change, supply chain ESG management, and driving community development.

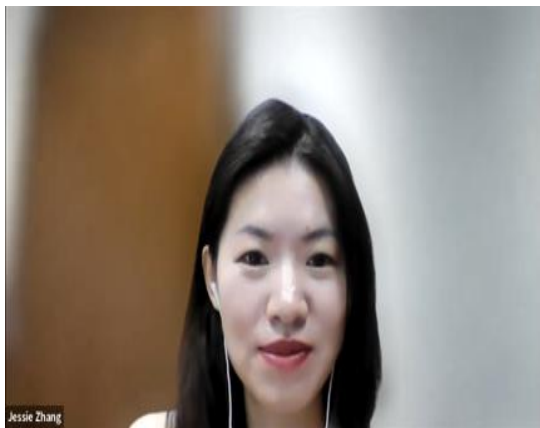


2022-08-23 14:16:34

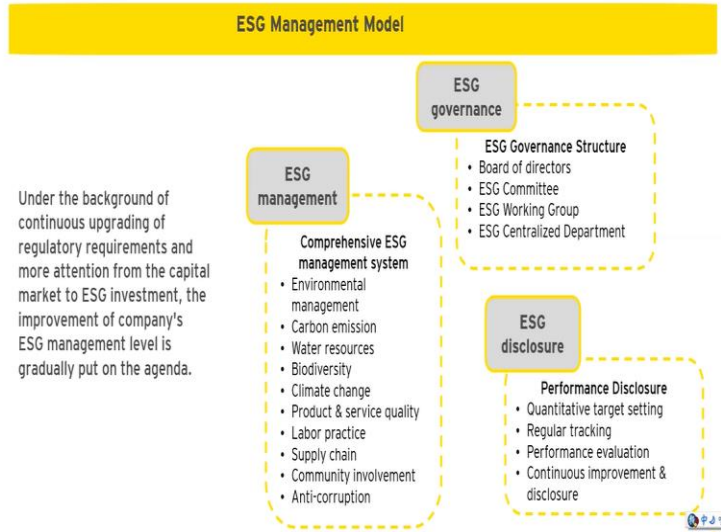


Speaker Mr. Lawrence Lau, Partner & Leader, Financial Accounting Advisory Services, EY Greater China kick start the webinar with ESG Background

Speaker Ms. Jessie Zhang, Partner, Sustainability Services, EY Greater China, discussing the ESG Management Model

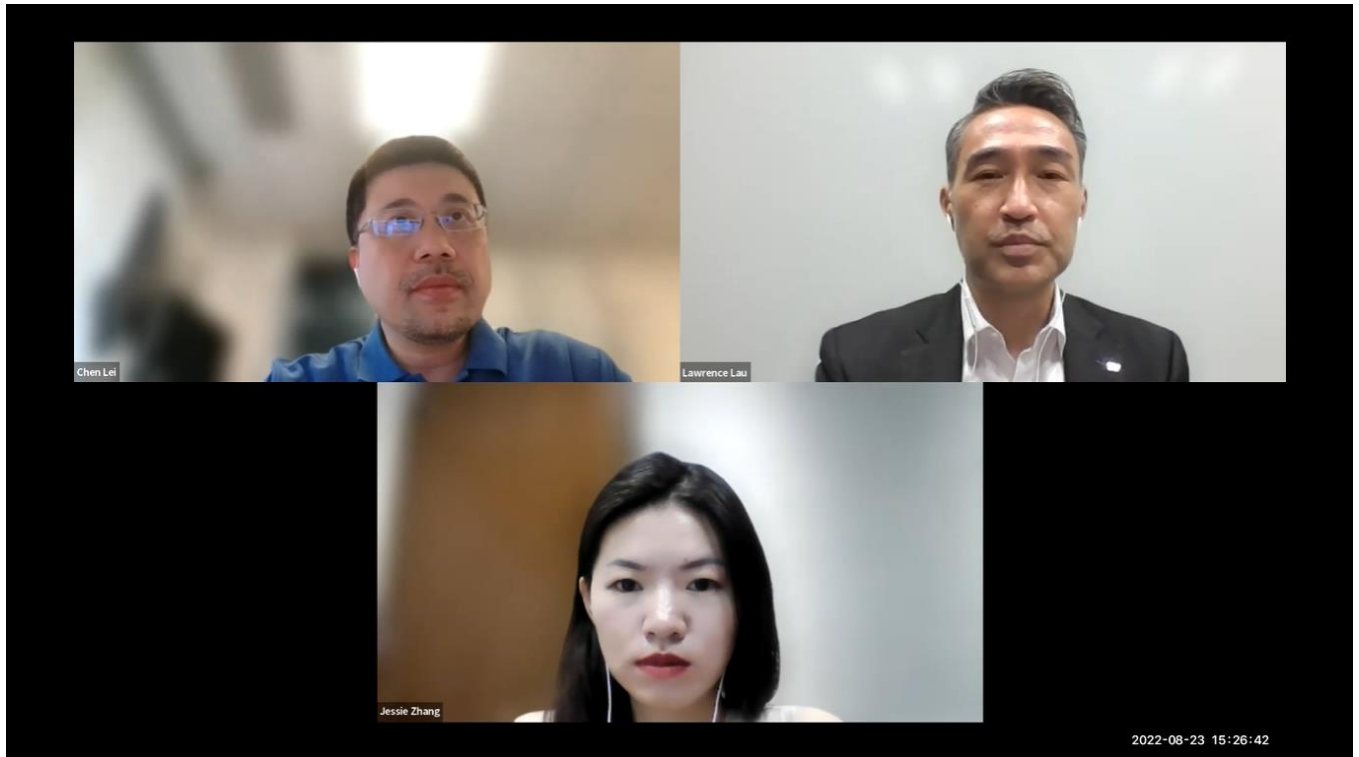


## A well-managed ESG system requires a closed-loop management model of ESG governance, management and disclosure



2022-08-23 14:54:41

# Asia And China Sustainability: Trends, Challenges And Outlook



*Mr. Lawrence Lau & Ms. Jessie Zhang with Dr. Chen Lei, Associate Professor, Accounting, Peking University during the webinar's open forum*